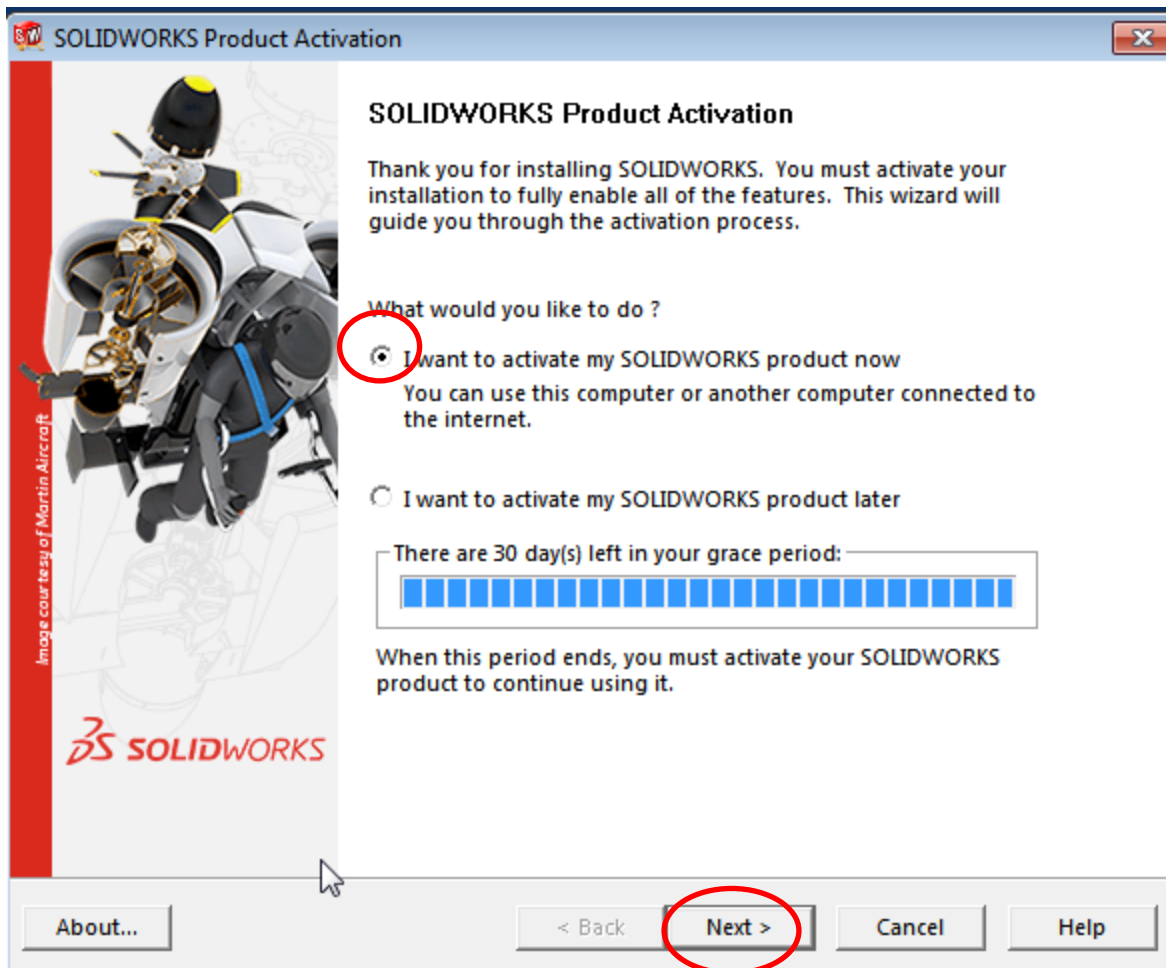
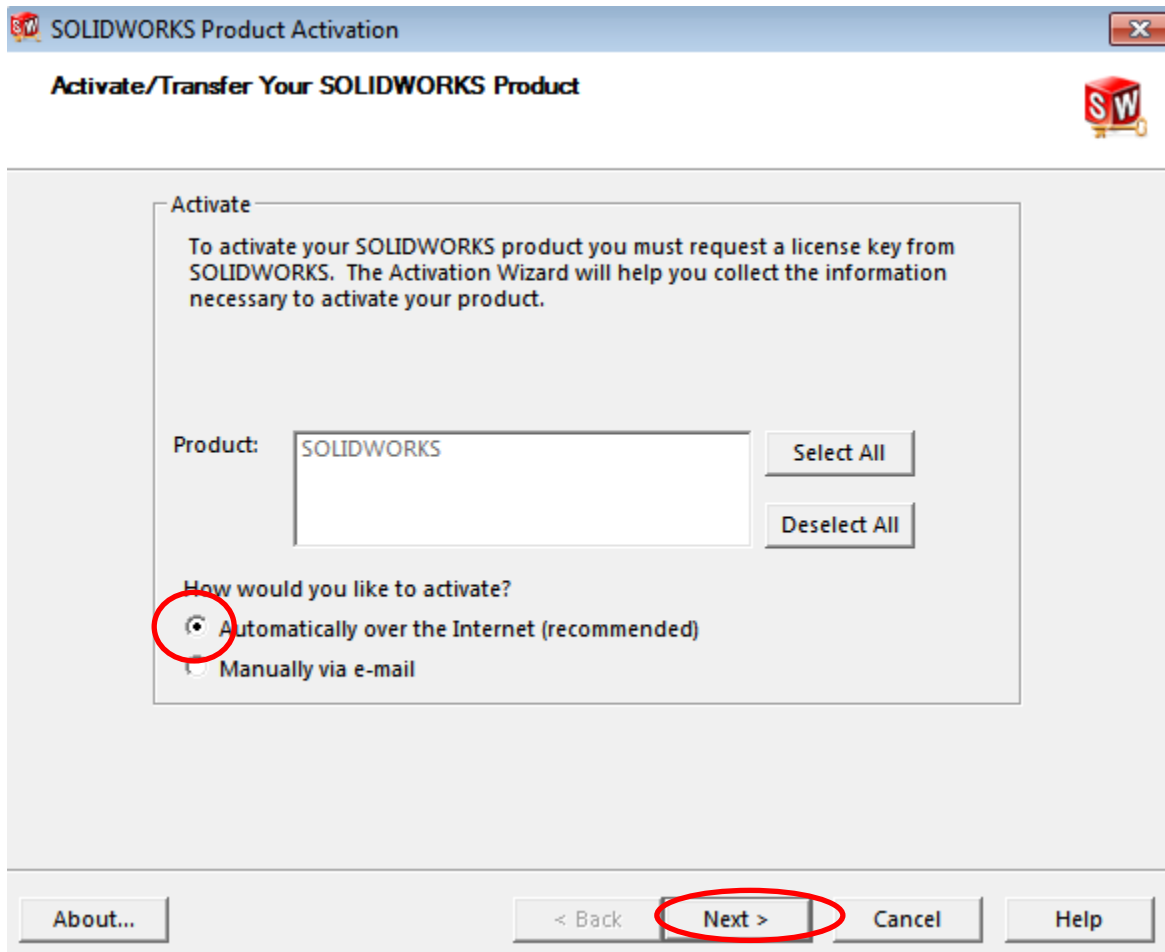


SolidWorks Education Edition Standalone License Activation

1. After installing the software on your computer, you will be asked to activate it. Click **Next**.

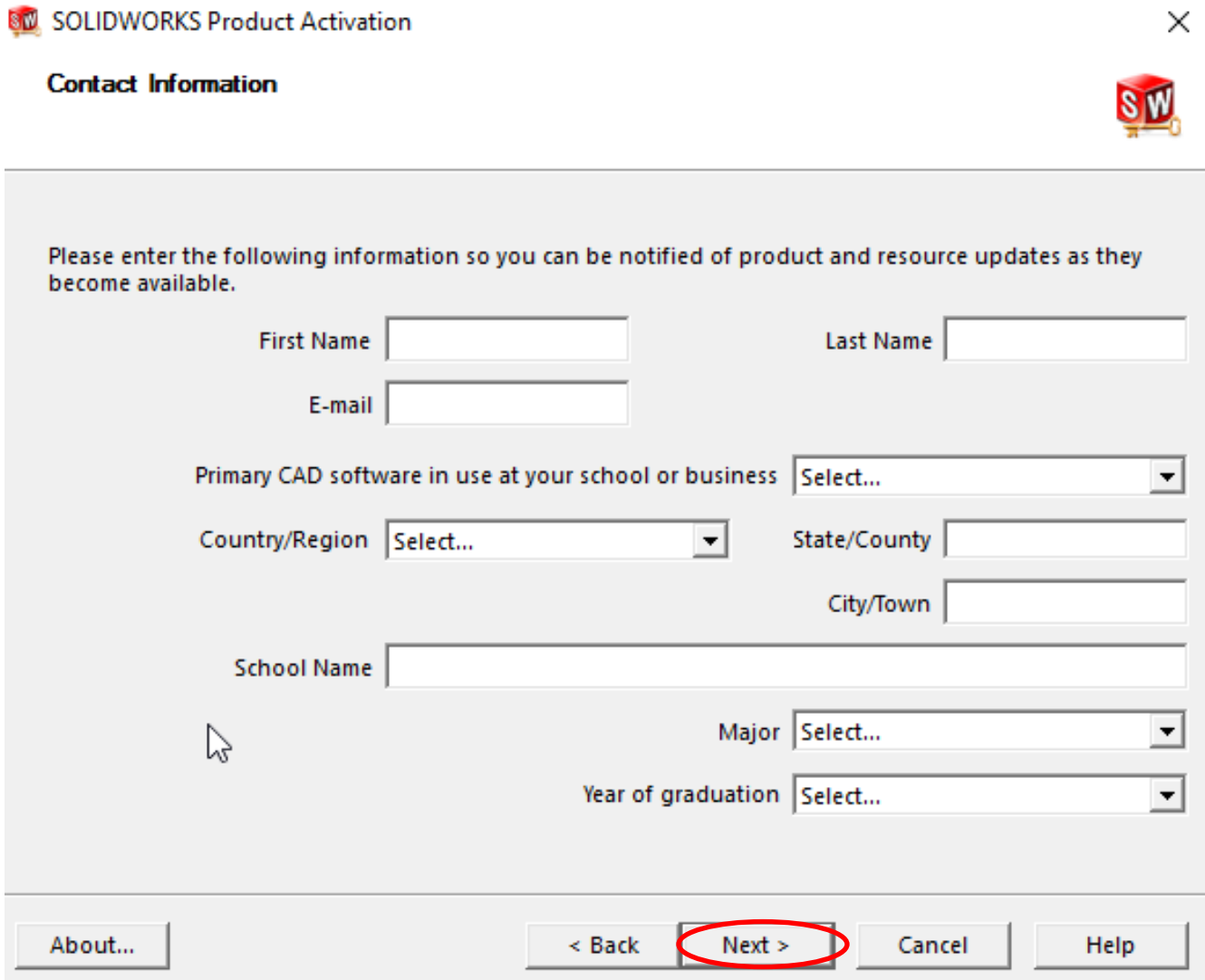


Note: Do **not** change the How would you like to activate? Click **Next**.



Clicking the **About** button will show you the Version, FlexNet Version, your Computer ID, and Computer Name.

2. Fill in your personal information carefully. You will need to provide the same information that you used to complete the **Education Trial & Student Access Form** when you downloaded the software. Select the Primary CAD software in use at your school or business. I selected AutoCAD. You cannot leave this blank. Click **Next**:

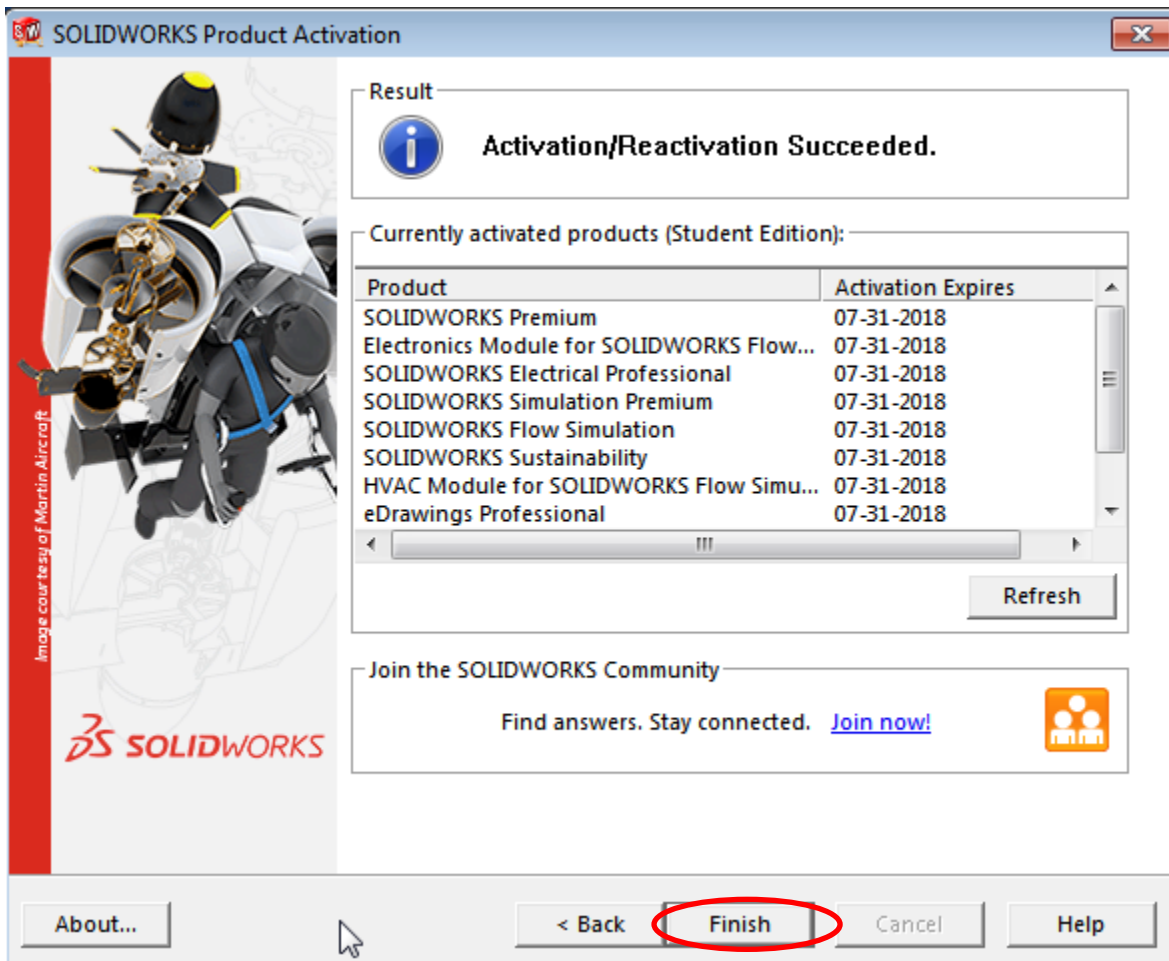


The screenshot shows the 'SOLIDWORKS Product Activation' dialog box with the 'Contact Information' tab selected. The dialog box contains the following fields and controls:

- First Name:
- Last Name:
- E-mail:
- Primary CAD software in use at your school or business:
- Country/Region:
- State/County:
- City/Town:
- School Name:
- Major:
- Year of graduation:

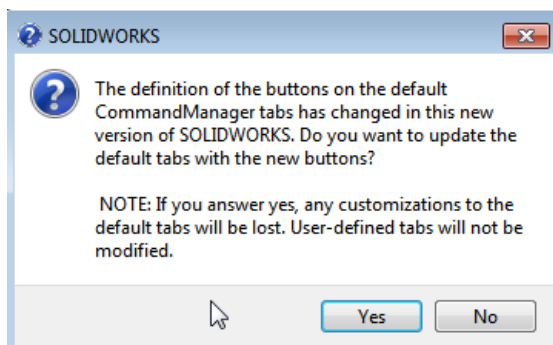
At the bottom of the dialog box, there are four buttons: 'About...', '< Back', 'Next >', and 'Help'. The 'Next >' button is circled in red.

If you have previously activated the program on your computer, the information will auto-populate. Verify that it is correct before clicking **Next**.



SolidWorks will now run. You may need to accept additional **End User Licenses Agreements (EULAs)** to run the software. Please do so. Click **Finish**.

Program changes between the version previously installed and the new version will generate warning boxes identifying those changes and providing you the option to keep your customizations. For example:



Note: If there are any issues with the activation, please get screenshots of the error, and email us at res-consult@virginia.edu.