

SAS 9.4 Installation Instructions for Windows

Teaching and Research (T&R)

Prerequisites

Prior to installation of SAS 9.4, you should review the [system requirements for SAS 9.4](#).

Instructions: New Install

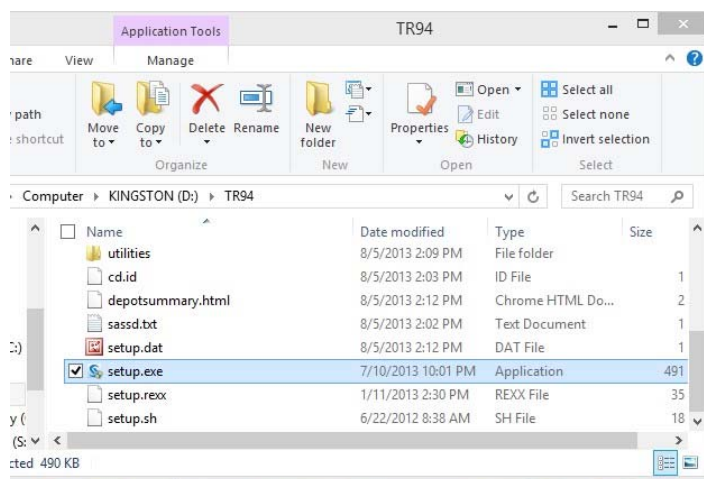
Faculty, staff, and students at UVa are eligible for SAS software for teaching and research purposes (T&R). There are several steps to this installation process. You will first log into the <http://virginia.onthehub.com> site with your UVa computing account (netbadge account). There you will order the SAS 9.4 product for your operating system and follow the instructions in order to download the license file (SID file) for SAS. The license file (SID file) is a small text file needed for installation.

SAS takes up a large amount of hard drive space (10-15 Gb) when installed, and in addition to the step above you must check out a USB drive containing the SAS Installation Depot. These USB drives are checked out from Research Software Support located in the Library Data Commons @Curry, 302 Ruffner Hall. If you have questions or need directions, contact us at 434-243-8800 or via email to res-consult@virginia.edu.

1. In the Windows environment SAS 9.4 requires a 64-bit operating system. Prior to installation of SAS 9.4, ensure that you have a compatible 64-bit operating system as follows:

- Windows 7 SP1 Professional, Ultimate or Enterprise, or
- Windows 10 Education Pro or Enterprise.

2. Browse to the folder containing the Depot on the portable USB drive (the TR94 folder), and double-click *setup.exe*. If your Windows machine does not show extensions for known file types, you will just see the name *setup* and the SAS icon. Use the setup corresponding to the icon below and double-click.



3. If prompted by Windows User Access Control dialog box, click **Yes** to proceed.

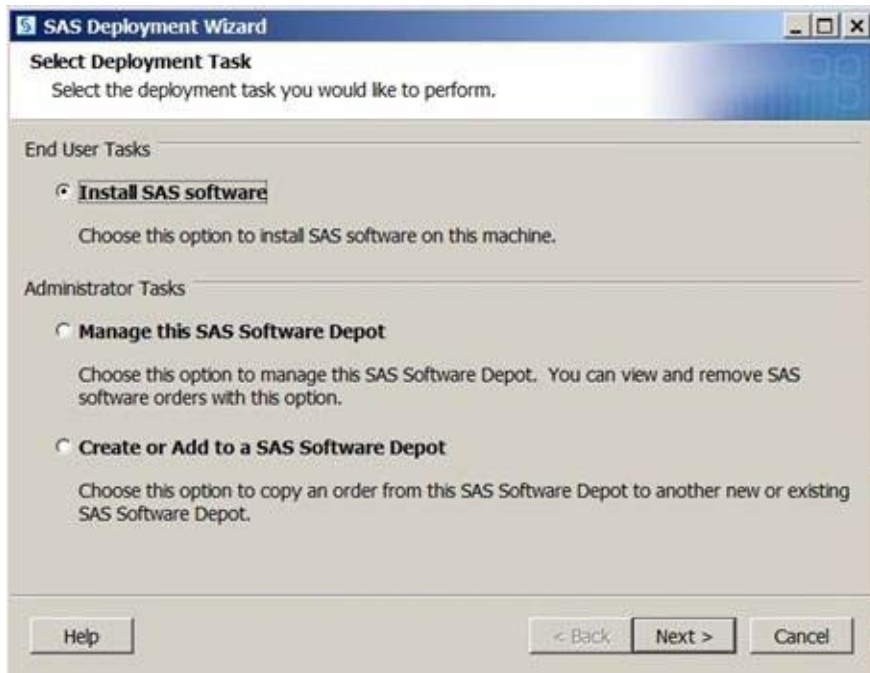
4. Select **English** and click **OK** to proceed.



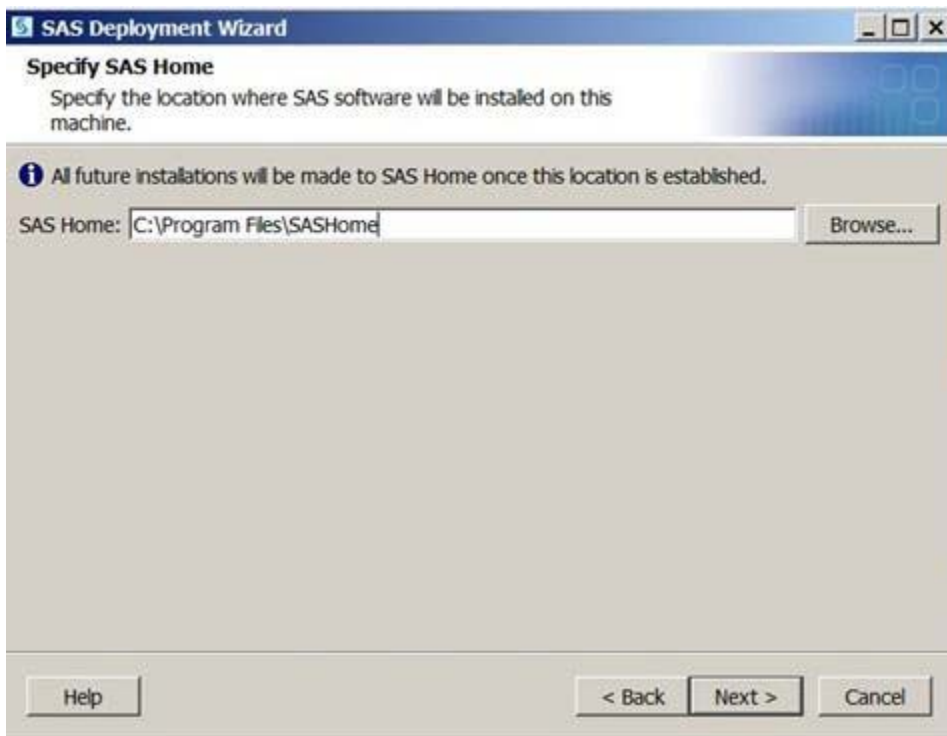
5. The **Deployment Wizard 9.4** interface will appear and take several minutes to proceed with a new dialog. Please be patient.



6. Select **Install SAS software** and click **Next**.



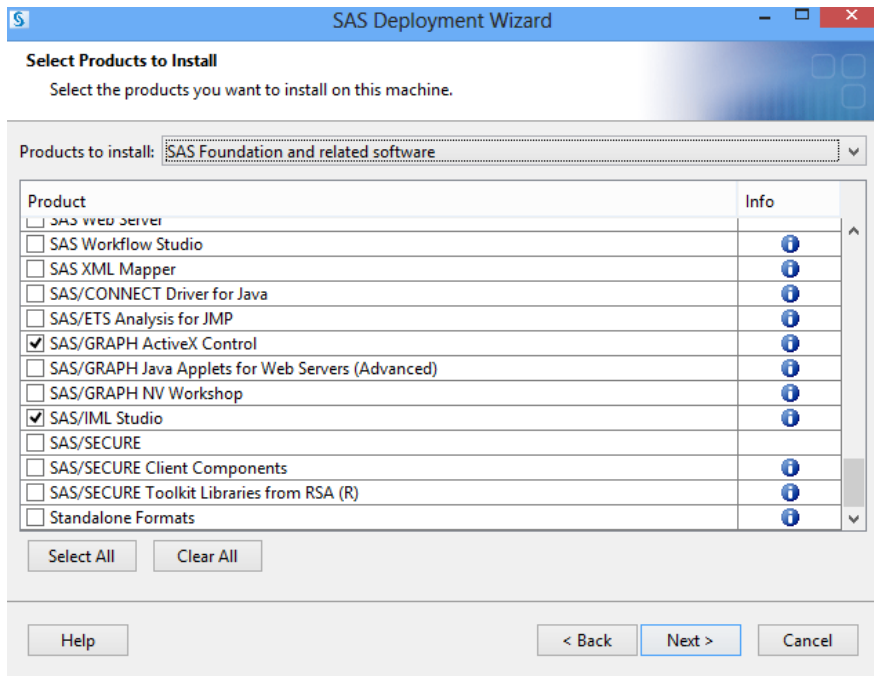
7. Defaults are recommended when possible, but if you must change SAS Home, then type the full path of the directory name or browse to the directory as appropriate. The default for SAS Home is **C:\Program Files\SASHome**. When done, click **Next**.



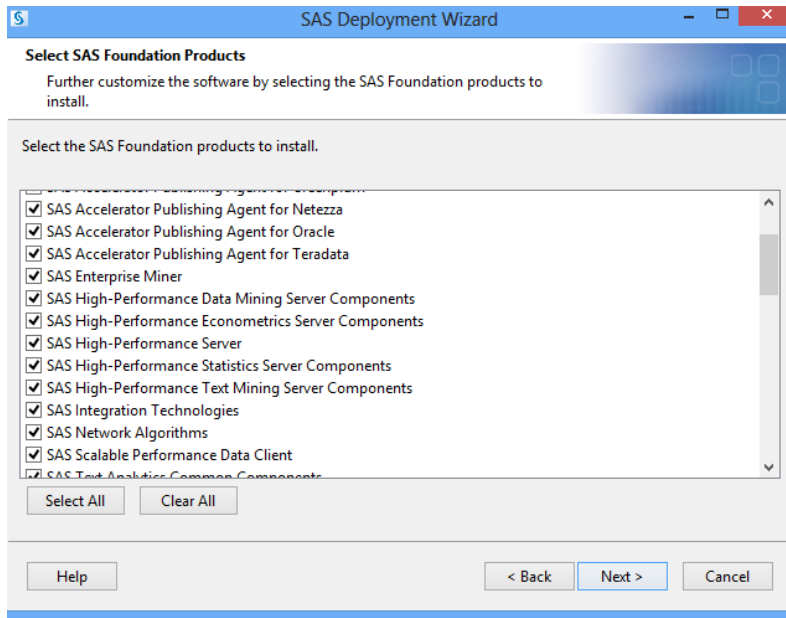
8. Select **Install SAS Foundation and Related Software** and click **Next**.



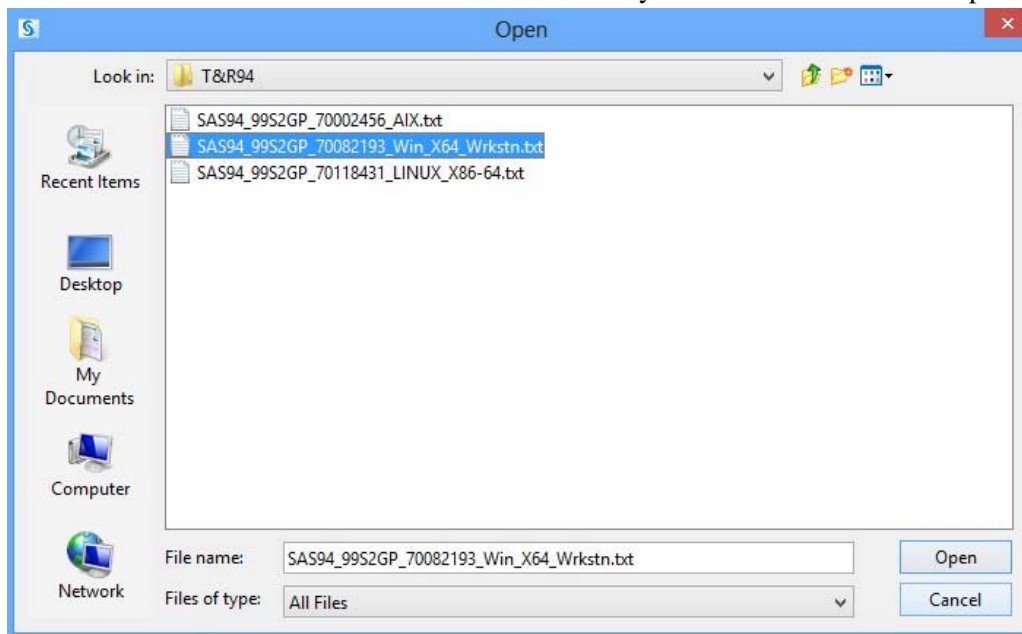
9. Accept the default selection for **Products to Install** and click **Next**.



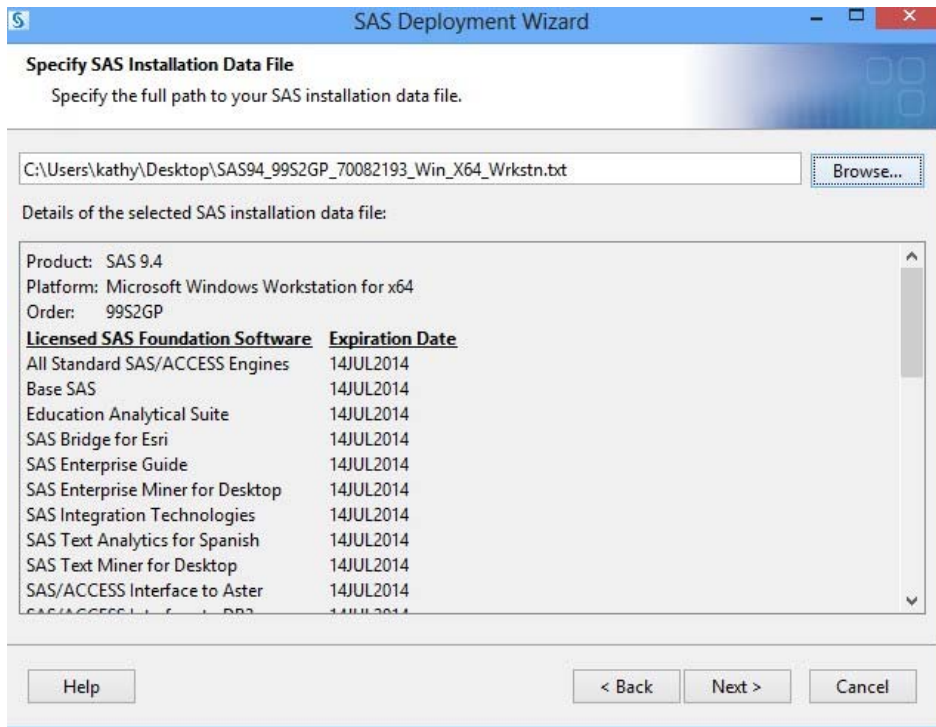
10. The default array of SAS Foundation products is highly recommended. Should you select all, you may need to acquire and install 3rd party software unsupported by ITS before completing your installation. Clicking Next is suggested.



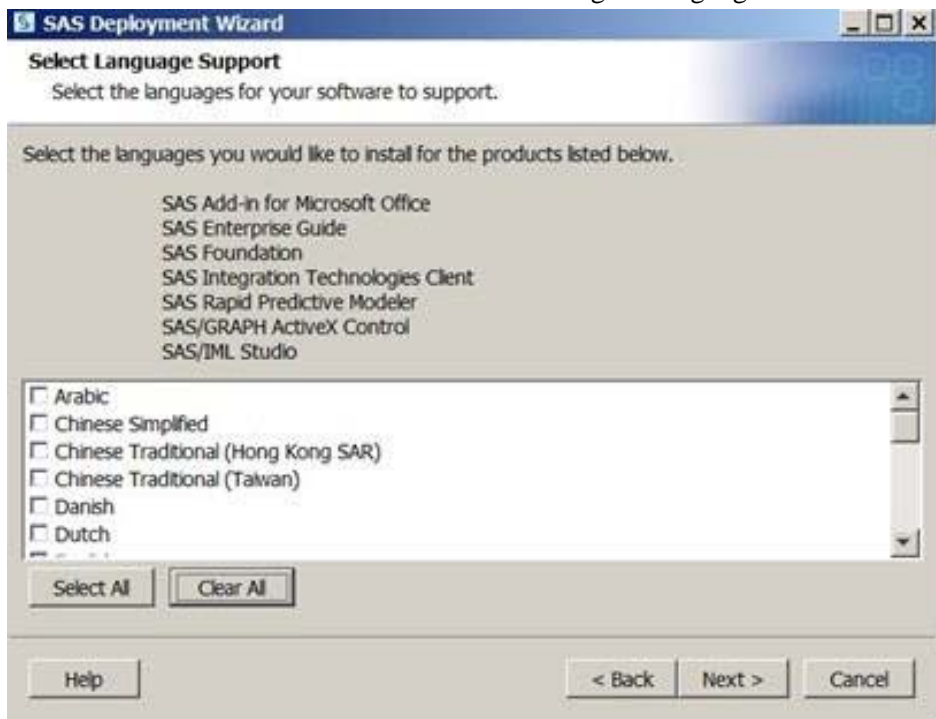
11. Browse to the SID file as obtained via instructions at the [beginning of this document](#). The names will not be as lengthy as that shown below, but the name should indicate that you have the license file for the 64-bit version of Windows. Browse to the location of your license file and click Open to proceed.



12. Click Next to proceed.



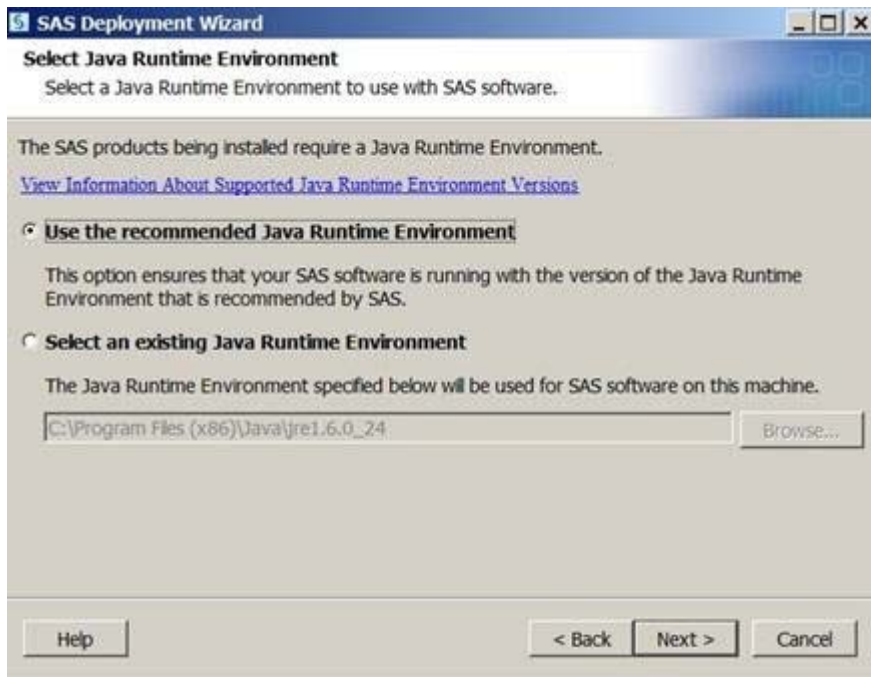
13. Select **Clear All** and click **Next**. Essential English language features will be installed.



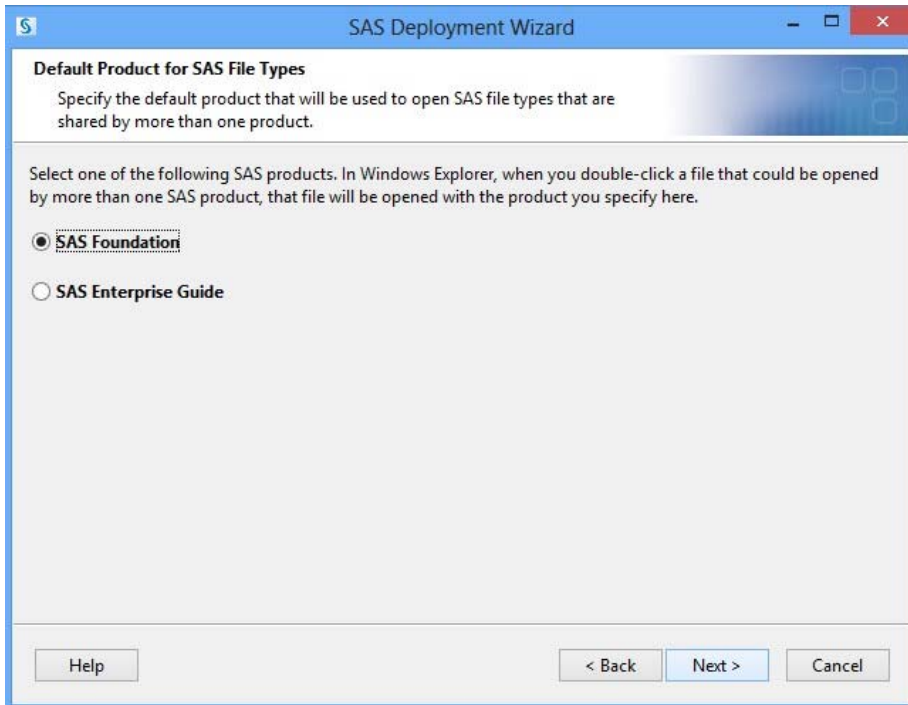
14. Accept the default Locale, and click **Next**.



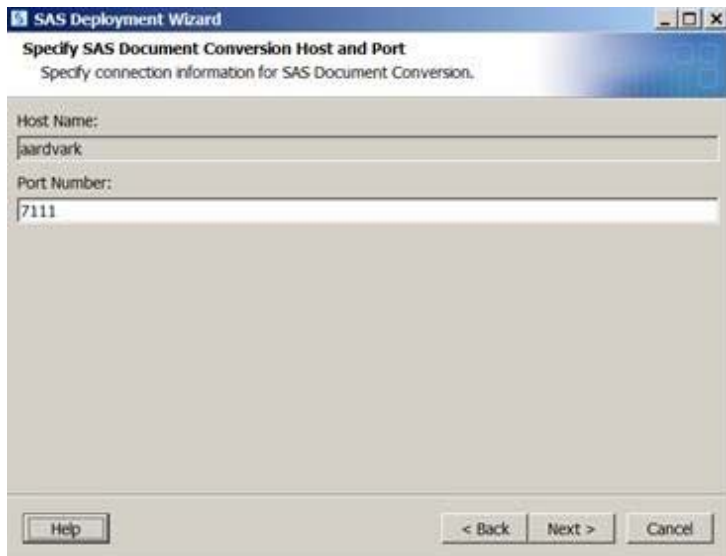
15. Use the recommended Java Runtime Environment to allow SAS to install its own JRE. Click **Next**.



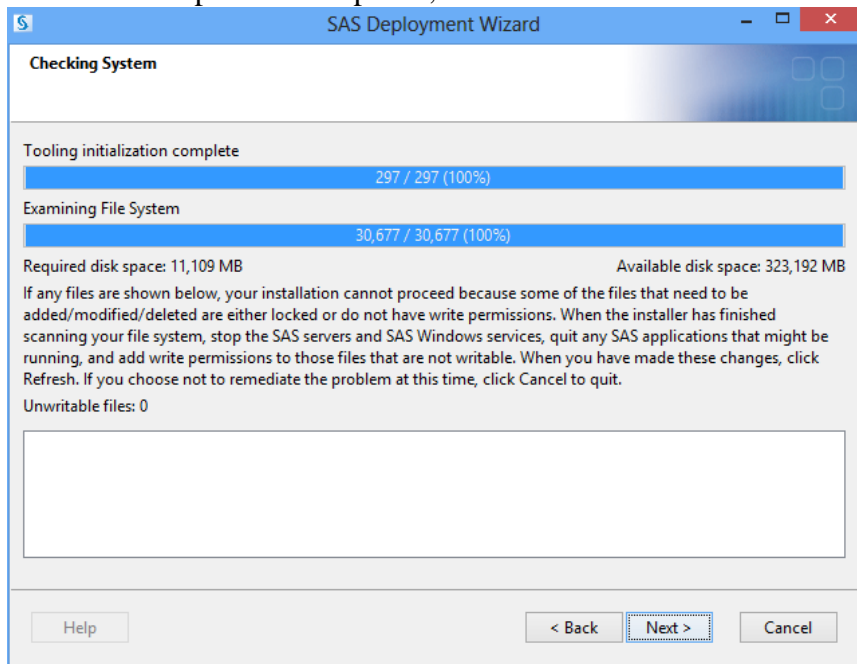
16. Select default – SAS Foundation – and click Next.



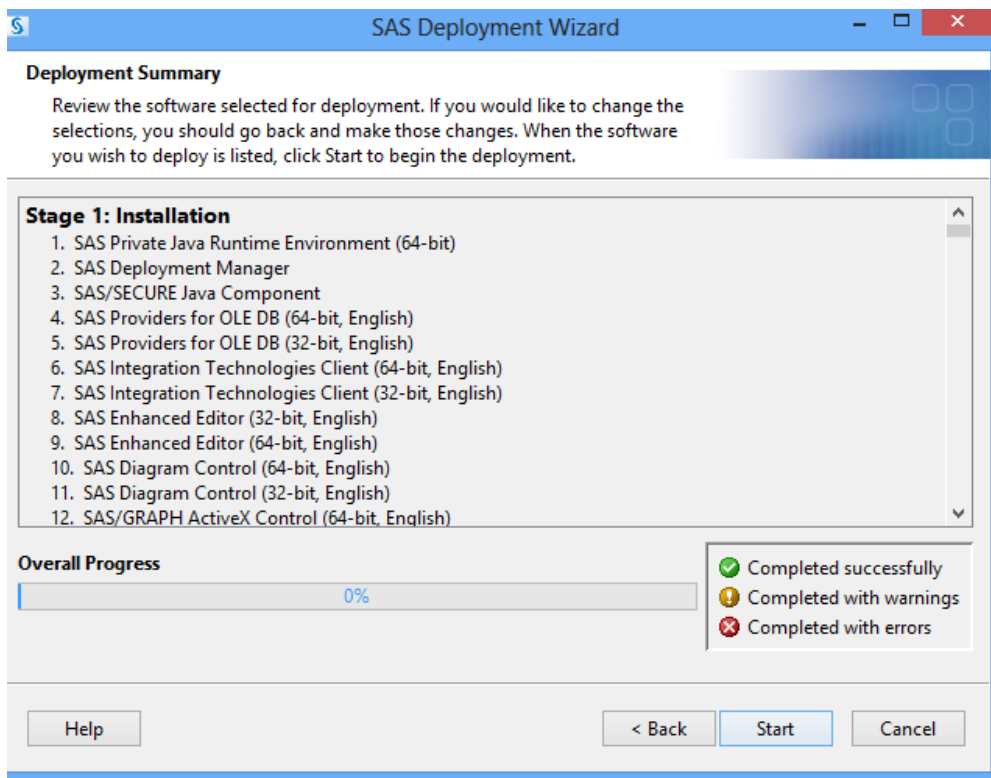
17. Most often you will accept defaults here and click Next. If you are installing SAS Text Analytics Common Components on your machine by itself, type the name of the host on which you installed or will be installing SAS Document Conversion in the **Host Name** text box. If you are installing SAS Document Conversion either by itself or with SAS Text Analytics Common Components, the text box lists the local host name by default and is not editable. Type the port number that your SAS Text Analytics software should use in the **Port** text box. The default port number is **7111**.



18. When the process completes, click Next.

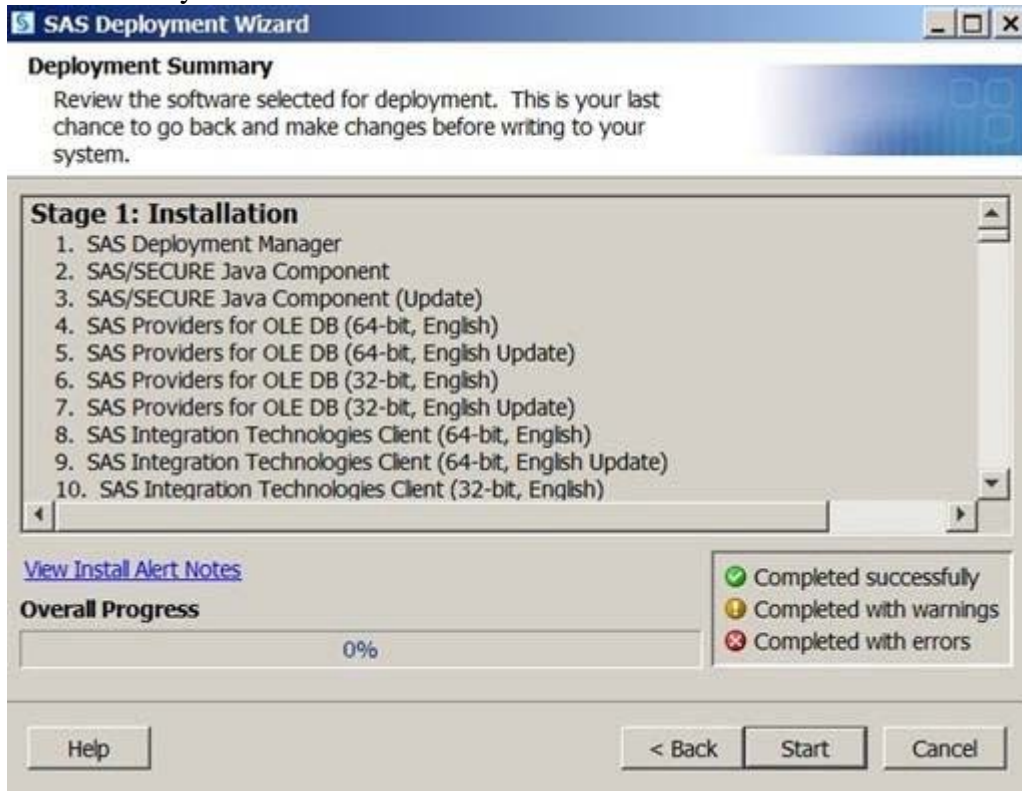


19. You now are able to review the Deployment Summary, and Start the Installation.



⚠ Allow the Installation to proceed. Some steps (step 1, for example) will take quite some time. Please be patient and try to avoid interrupting the process as doing so may make installation in

the future very difficult.



When Deployment is complete, click **Next**.



You will be presented with various resource URLs upon successful installation.



By default in Windows 8 the executable that starts SAS is C:\Program Files\SASHome\SASFoundation\9.4\sas.exe. You may want to add a shortcut to the desktop or pin the program to the taskbar.

```
Log - (Untitled)
NOTE: Copyright (c) 2002-2012 by SAS Institute Inc., Cary, NC, USA.
NOTE: SAS (r) Proprietary Software 9.4 (TS1M0 MBCS3170)
      Licensed to UNIVERSITY OF VIRGINIA - SFA - T&R, Site 70082193.
NOTE: This session is executing on the X64_8PRO platform.

NOTE: Updated analytical products:
      SAS/STAT 12.3 (maintenance)
      SAS/ETS 12.3 (maintenance)
      SAS/OR 12.3 (maintenance)
      SAS/IML 12.3 (maintenance)
      SAS/QC 12.3 (maintenance)

NOTE: Additional host information:
      X64_8PRO WIN 6.2.9200 Workstation

NOTE: SAS initialization used:
      real time          9.01 seconds
      cpu time           0.98 seconds
```